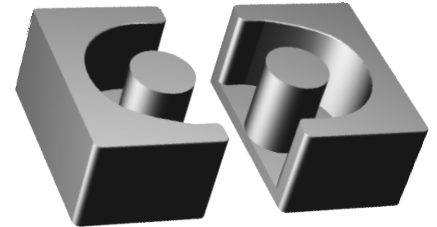
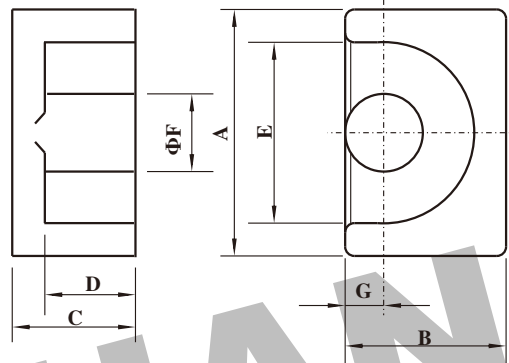


Dimension: (UNIT:mm)

A	9.2 ± 0.2
B	6.5-0.3
C	3.75 ± 0.1
D	2.5+0.2
E	7.4 ± 0.2
F	3.4-0.2
G	1.8-0.2
H	



**Test conditions**

AL: F=1.0KHz U=0.3V N=10Ts

**Effective parameter**

C1(mm) <sup>-1</sup>	Ae(mm <sup>2</sup> )	Le(mm)	Ve(mm <sup>3</sup> )	Weight(g)
1.45	10.7	15.5	165	≈1.4

Core sets for filter applications.

Clamping force for AI measurements,20+/-10N.

Core sets of high permeability grades.

Clamping force for AI measurements,20+/-10N

Grade	AL (nH)	μe	Type number
H7K	3400±25%	≈3920	EP7-H7K
H10K	5200+40/-30%	≈5990	EP7-H10K
H12K	5800+40/-30%	≈6680	EP7-H12K

**Properties of core sets under power conditions**

Grade	AL (nH)	μe	AIR GAP μm	Type number
P4	25 ± 3%	≈29	≈880	EP 7-P4
	40 ± 3%	≈46	≈480	EP 7-P4
	63 ± 3%	≈73	≈270	EP 7-P4
	100 ± 3%	≈115	≈150	EP 7-P4
	160 ± 5%	≈184	≈90	EP 7-P4
1200 ± 25%	≈1380	≈0	EP 7-P4	
HQ2KA	11200 ± 25%	≈1290	≈0	EP7-HQ2KA
HQ2K	25 ± 3%	≈29	≈880	EP7-HQ2K
	40 ± 3%	≈46	≈480	EP7-HQ2K
	63 ± 3%	≈73	≈270	EP7-HQ2K
	100 ± 3%	≈115	≈150	EP7-HQ2K
	160 ± 5%	≈184	≈90	EP7-HQ2K
1000 ± 25%	≈1150	≈0	EP7-HQ2K	
P5	850 ± 25%	≈980	≈0	EP7-P5

Grade	B (mT)at H=250 A/m F=25KHz T=100℃	Core loss (w) at			
		F=25 KHz B=200mT T=100℃	f=100 KHz B=100mT T=100℃	F=100 KHz B=200mT T=100℃	F=400 KHz B=50mT T=100℃
P4	≥320	-	≤0.014	≤0.08	-
HQ2KA	≥340	-	≤0.011	≤0.06	≤0.025
HQ2K	≥315	-	≤0.02	-	≤0.035
P5	≥320	-	-	-	≤0.015

**Properties of core sets under power conditions (continued)**

Grade	B (mT)at H=250 A/m F=25KHz T=100℃	Core loss (w) at			
		F=500 KHz B=50mT T=100℃	F=500 KHz B=100mT T=100℃	F=1.0 MHz B=30mT T=100℃	F=3.0MHz B=10mT T=100℃
P4	≥320	-	-	-	-
HQ2KA	≥340	≤0.055	-	-	-
HQ2K	≥315	-	-	-	-
P5	≥320	≤0.02	≤0.15	-	-

**Note:**

- 1:Document is the property of FUAN Inc & is not allow to be duplicated without authorization
- 2:RoHS compliant.